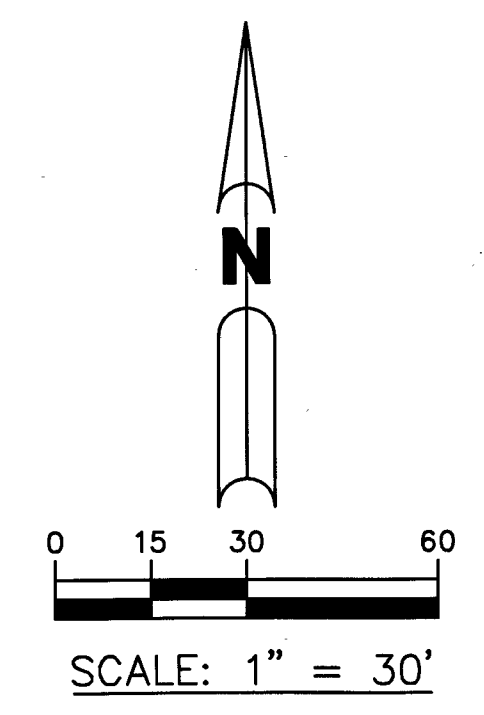
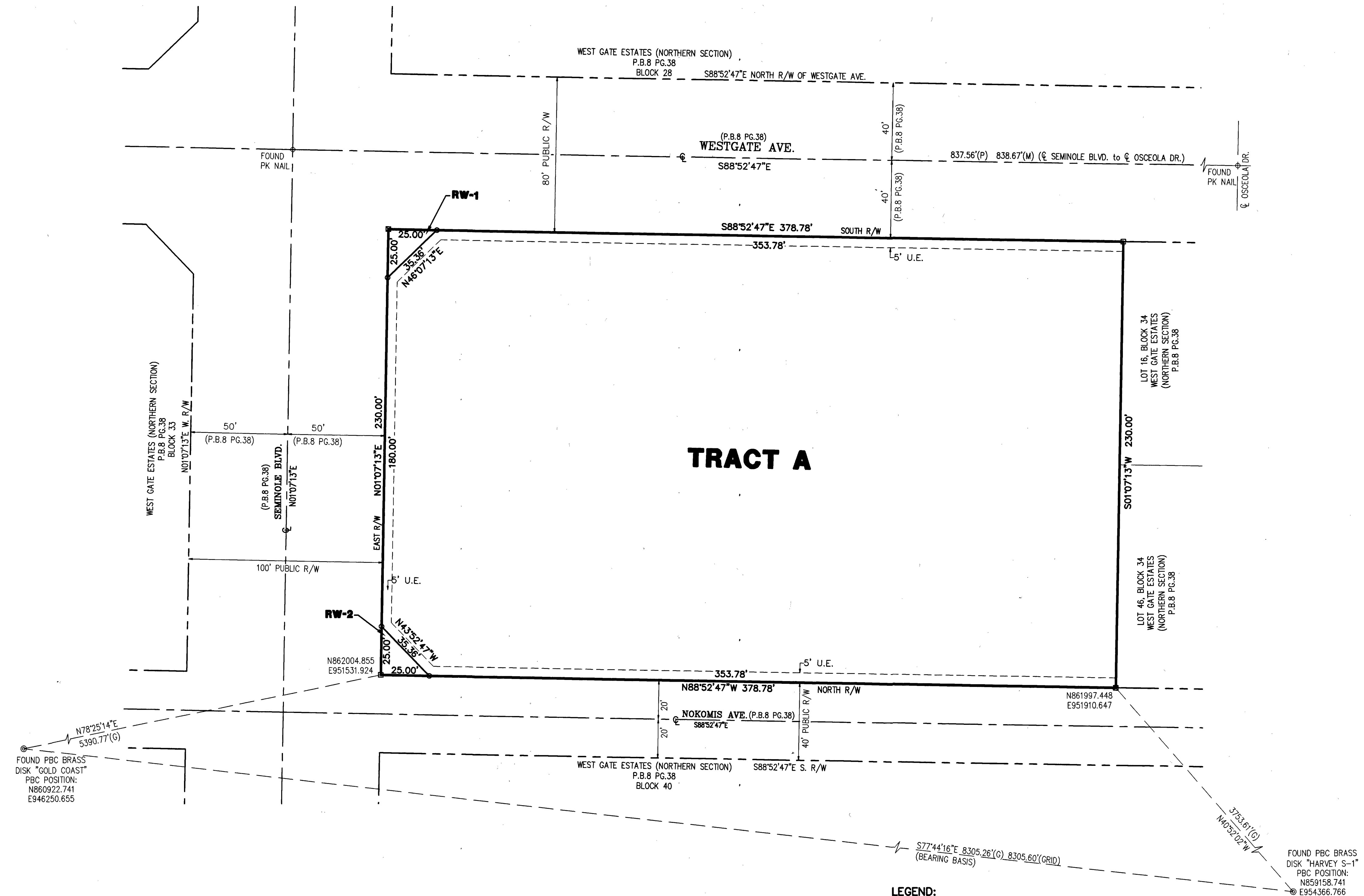


192

WESTGATE TERRACE

A REPLAT OF LOTS 1 THROUGH 15 AND LOTS 31 THROUGH 45, BLOCK 34,
 WEST GATE ESTATES (NORTHERN SECTION), RECORDED IN PLAT BOOK 8, PAGE 38,
 OF THE PUBLIC RECORDS OF PALM BEACH COUNTY, FLORIDA
 LYING IN THE NORTH ONE-HALF (N.1/2) OF SECTION 30,
 TOWNSHIP 43 SOUTH, RANGE 43 EAST, PALM BEACH COUNTY, FLORIDA

SHEET 2 OF 2



TRACT A

FOUND PBC BRASS
 DISK "GOLD COAST"
 PBC POSITION:
 N860922.741
 E946250.655

FOUND PBC BRASS
 DISK "HARVEY S-1"
 PBC POSITION:
 N859158.741
 E954366.766

- LEGEND:**
- ABBREVIATIONS:**
 ORB - OFFICIAL RECORD BOOK
 P.B. - PLAT BOOK
 NO. - NUMBER
 PG. - PAGE
 R/W - RIGHT-OF-WAY
 SEC. - SECTION
 PBC - PALM BEACH COUNTY
 CL - CENTERLINE
 NAD - NORTH AMERICAN DATUM
- LB - LICENSED BUSINESS
 30/43/43 - SECTION 30, TOWNSHIP 43 SOUTH,
 RANGE 43 EAST
 U.E. - UTILITY EASEMENT
 D.E. - DRAINAGE EASEMENT
 LLC - LIMITED LIABILITY COMPANY
 (G) - GROUND DISTANCE
 CRA - COMMUNITY REDEVELOPMENT AGENCY

- SYMBOLS:**
- PERMANENT REFERENCE MONUMENT (P.R.M.), SET 4"x4" CONCRETE MONUMENT WITH DISK STAMPED "PRM LB6473"
 - ⊠ PERMANENT REFERENCE MONUMENT (P.R.M.), SET NAIL & DISK STAMPED "PRM LB6473"
 - MONUMENT, SET 1/2" IRON ROD WITH "BROWN & PHILLIPS, INC." CAP

STATE PLANE COORDINATES:
 A. COORDINATES SHOWN ARE GRID
 B. DATUM - NAD 83, 1990 ADJUSTMENT
 C. ZONE - FLORIDA EAST
 D. LINEAR UNIT - US SURVEY FOOT
 E. COORDINATE SYSTEM - 1983 STATE PLANE
 F. TRANSVERSE MERCATOR PROJECTION
 G. ALL DISTANCES ARE GROUND UNLESS OTHERWISE NOTED
 H. SCALE FACTOR - 1.0000412
 I. GROUND DISTANCE x SCALE FACTOR = GRID DISTANCE
 J. ROTATION EQUATION: NONE

PREPARING SURVEYOR & MAPPER'S STATEMENT
 THIS INSTRUMENT WAS PREPARED BY
 JOHN E. PHILLIPS III, P.S.M. 4826

BROWN & PHILLIPS, INC.
 CERTIFICATE OF AUTHORIZATION # LB 6473
 1860 OLD OKEECHOBEE RD., SUITE 509
 WEST PALM BEACH, FLORIDA 33409
 561-615-3988, 615-3986 FAX